



DeltaDust[®]

INSECTICIDE

- PROVIDES QUICK CONTROL OF ANTS, BEES, COCKROACHES, FLEAS, SILVERFISH, TICKS, AND NUMEROUS STORED PRODUCT PESTS AS LISTED.
- KILLS LISTED CRAWLING INSECTS UP TO 8 MONTHS WHEN LEFT UNDISTURBED.
- FOR USE INDOORS AND OUTDOORS.
- DOES NOT CLUMP OR ABSORB MOISTURE.
- NON-STAINING AND ODORLESS.

ACTIVE INGREDIENT:

Deltamethrin..... 0.05%

OTHER INGREDIENTS 99.95%

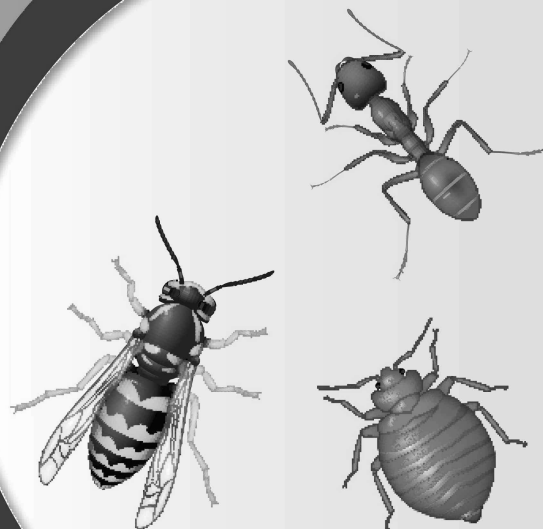
TOTAL: 100.00%

EPA Reg. No. 432-772

See Booklet for Complete Precautionary Statements and Directions for Use.

KEEP OUT OF REACH OF CHILDREN

Ants • Bed Bugs • Wasps



Net Weight

1 Pound

04191071

04494104H 160805AV2

PARA EL USUARIO: Si usted no lee inglés, no use este producto hasta que le hayan explicado completamente las instrucciones en la etiqueta. (TO THE USER: If you cannot read English, do not use this product until the label has been fully explained to you.)

**For MEDICAL and TRANSPORTATION Emergencies ONLY Call
24 Hours A Day 1-800-334-7577
For PRODUCT USE Information Call 1-800-331-2867**

PRECAUTIONARY STATEMENTS

ENVIRONMENTAL HAZARDS

This product is extremely toxic to fish and aquatic invertebrates. Use with care when applying in areas adjacent to any body of water. To protect the environment, do not allow pesticide to enter or run off into storm drains, drainage ditches, gutters, or surface waters. Applying this product in calm weather when rain is not predicted for the next 24 hours will help to ensure that wind or rain does not blow or wash pesticide off the treatment area.

This pesticide is highly toxic to bees exposed to direct treatment on blooming crops or weeds. Do not apply this product or allow it to drift to blooming crops or weeds while bees are foraging the treatment area.

DIRECTIONS FOR USE

It is a violation of Federal Law to use this product in a manner inconsistent with its labeling. IMPORTANT: Read the entire Directions for Use, Precautions and Disclaimer of Warranties before using this product.

Containers larger than one pound may not be used or stored in food handling establishments.

Not for use on plants being grown for sale or other commercial use, or for commercial seed production, or for research purposes. For use on plants intended for aesthetic purposes or climatic modification and being grown in interior plantscapes, ornamental gardens, parks, or on golf courses, or lawns and grounds.

DeltaDust® Insecticide is a ready-to-use insecticide dust which exhibits effective knockdown and residual control against the pests listed when used according to label directions.

APPLICATION RESTRICTIONS

Do not water the treated area to the point of run-off.

Do not make applications during rain.

Do not apply directly to sewers or drains, or to any area like a gutter where drainage to sewers, storm drains, water bodies, or aquatic habitat can occur, except as directed by this label.

Do not apply into closed air handling systems, voids or ducts including Heating, Ventilation, Air Conditioning (HVAC) appliances and systems that circulate, filter, or condition air that is directed into

rooms that are, or may be, occupied.

DeltaDust Insecticide can be used for residual pest control in and on buildings and structures and their immediate surroundings. Do not use in aircraft cabins. Permitted areas of use include:

aircraft	meat slaughtering and packing plants
animal quarters/kennels	mobile homes and recreational vehicles
apartment buildings	nursing homes/day care centers
bakeries	rail cars
breweries	restaurants
buses	schools
canneries	sewers and underground tunnels
cafeterias	stores and institutions
dairies	supermarkets
food/feed manufacturing, processing and service establishments	telecommunication conduits
greenhouses (non-commercial)	theaters
grocery stores and supermarkets	trucks and trailers
hospitals	utility vaults and conduits
hotels/motels	vessels
houses	warehouses
industrial buildings and installations	ZOOS
laboratories	
mausoleums	

DeltaDust Insecticide is intended for applications with a hand or power duster (Actisol® DPA or similar equipment), with a paint brush or by other suitable means, to hiding and runway areas and other places where insects are found. In living areas, make applications in such a manner as to avoid depositions on exposed surfaces or introducing the material into the air. In the home, all food processing surfaces and utensils should be covered during treatment or thoroughly washed before use. Exposed food should be covered or removed.

To apply insecticide directly into cracks and crevices, use a bulbous duster or other suitable equipment. Apply lightly and uniformly to infested area. Pay particular attention to cracks and crevices; service ducts; false floors and ceilings; wall voids; around electrical and telephone fittings and equipment; around water and sewer pipes; under and behind cabinets, refrigerators, and sinks; around windows and door frames; along baseboards; in attics and crawl spaces. The amount to be applied will vary with the site but should usually be in the range of 2 - 3 grams of DeltaDust Insecticide per square yard (or 0.5 lbs per 1000 square feet).

INDOOR USE FOOD/FEED HANDLING ESTABLISHMENT AP- PLICATIONS

DeltaDust Insecticide applications are permitted in both food/feed and non-food areas of food/feed handling establishments as a general surface, spot, or crack and crevice treatment. Food/feed handling establishments are defined as places other than private residences in which exposed food/feed is held, processed, prepared, or served. Included also are areas for receiving, storing, packing (canning, bottling, wrapping, boxing), preparing, edible waste storage, and enclosed processing systems (mills, dairies, edible oils, syrups) of food. Serving areas where food is exposed and the facility is in operation are also considered food areas.

Non-Food/Non-Feed Areas: Examples of non-food/non-feed areas include garbage rooms, lavatories, floor drains (to sewers), entries and vestibules, offices, locker rooms, machine rooms, boiler rooms, mop closets, and storage (after packaging, canning or bottling).

General Surface Application: Do not apply as a general surface application in the food/feed handling areas of the facility, when the facility is in operation or foods are exposed. Do not apply directly to food products. Cover or remove all food processing and/or handling equipment during application. After application in food processing plants, bakeries, cafeterias, and similar facilities, wash all equipment, benches, shelving, and other surfaces which food will contact. Clean food handling or processing equipment and thoroughly rinse with clean, fresh water.

Spot or Crack and Crevice Application: Spot and/or Crack and Crevice applications may be made while the facility is in operation provided exposed food is covered or removed from area being treated prior to application. Do not apply directly to food or food handling surfaces. DeltaDust Insecticide may also be applied as a void treatment using suitable equipment, as mentioned above, including Actisol DPA equipment. Be sure to thoroughly treat service ducts, false floors and ceilings, wall voids, attics, and crawl spaces. The amount of dust to be applied will vary with the site but should usually be in the range of 2 - 3 grams per square yard (or 0.5 lbs per 1000 square feet). Dust applications should be made in a manner to avoid deposits in exposed surfaces, introducing the material in the air.

ANTS, BOXELDER BUGS, COCKROACHES (INCLUDING BOTH RESISTANT AND NON-RESISTANT STRAINS), CRICKETS, FLEAS, FIREBRATS, AND SILVERFISH: Apply DeltaDust Insecticide thoroughly to all areas where these pests crawl and hide, especially in those areas described above. For ants, apply to ant trails, around doors and windows, and other places where ants enter premises.
TERMITES, CARPENTER ANTS, AND CARPENTER BEES: Apply to

voids or channels in damaged wooden members of a structure; to cracks, spaces, or bearing joints between wooden members of a structure; or between such members and the foundation; and in locations vulnerable to termite attack. Drilling may be necessary prior to applying DeltaDust Insecticide in these locations, but it must be recognized that such drilling and treating of timber in a particular location may not result in complete coverage of infested and vulnerable voids or galleries. Drilling directly overhead with subsequent application of DeltaDust Insecticide should be avoided. DeltaDust Insecticide can be applied in attics and crawl spaces to prevent entry of drywood and formosan termites at a rate of 0.5 lb per 1000 square feet of floor area. In these treatments, all vents and blowers should be closed. Retreat if necessary. For subterranean termites the purpose of such applications of DeltaDust Insecticide is to kill workers or winged forms which may be present in the treated channels at the time of treatment. Such applications are not a substitute for mechanical alteration, soil treatment, or foundation treatment, but merely a supplement. For active termite infestations get a professional termite inspection. This supplemental treatment can be particularly supportive of new construction.

CENTIPEDES, GROUND BEETLES, MILLIPEDES, SCORPIONS, SPIDERS, AND SOWBUGS: Apply DeltaDust Insecticide along and behind baseboards, to window and door frames, corners, pipes, storage locations, attics, crawl spaces, and other areas where these pests may enter or crawl.

WASPS AND BEES: It is generally advisable to treat wasp and bee nests in the evening when insects are less active and have returned to the nest. Wear protective clothing if deemed necessary to avoid stings. Using hand or power duster (Actisol® or similar equipment) or other suitable means, with extension tubes if necessary, thoroughly dust nest, entrance, and surrounding areas where insects alight. Nests in wall voids can be located by listening with your ear against the wall. Drill a hole in the area, blow dust in and reseal. For ground wasps, dust entrance and surrounding areas. For best results check nests carefully one or two days after treatment to ensure complete kill, then remove and destroy nest to prevent emergence of newly-hatched insects. If removal is not feasible, retreat the nest, if necessary. Do not use this product to treat overhead nests.

WEBBING CLOTHES MOTHS: Use DeltaDust Insecticide as a crack and crevice treatment in closets and other storage areas where these pests are found. This is an adjunct treatment and will not control moth larvae already on the clothes. DO NOT apply this product directly to clothing.

CARPET BEETLES (BLACK, FURNITURE, COMMON, AND VARIED): Dust where these insects are found, for example: on and

under edges of floor coverings, around baseboards, under rugs and furniture, and in closets. In residential areas do not apply as a broadcast application to floors or floor coverings.

BED BUGS: Apply DeltaDust Insecticide thoroughly to all areas where these pests are typically found including: folds and tufts of mattresses, coils or springs, cracks, and hollow posts of bed-frames, upholstery of chairs and sofas, picture frame moldings and all cracks and crevices in the room should be treated. Allow powder to remain in contact with folds and tufts of mattresses, chair and sofa upholstery for 4 - 6 hours, then thoroughly vacuum these treated areas, dispose of vacuum bag and place clean linens on bed. Also vacuum treated areas that will come into direct contact with humans and pets.

STORED PRODUCT & PANTRY PESTS: To aid in the control of the exposed stages of:

cadelles	merchant grain beetles
cheese mites	red flour beetles
cigarette beetles	rice weevils
confused flour beetles	rusty grain beetles
dark meal worms	saw-toothed grain beetles
dermestids	spider beetles
drugstore beetles	tobacco moths
grain mites	yellow meal worms
granary weevils	warehouse moths
lesser grain borers	indian meal
lesser mealworms	mediterranean flour

FOOD PROCESSING PESTS

Same crawling & flying pests as listed previously and Fruit flies, Phorid flies, and Sciarid flies.

Clean up waste materials, dust, dirt, and other debris. Thoroughly treat floors, walls, and other surfaces in storage and handling areas. Apply dust in cracks and crevices, behind and under cupboards, and other difficult to reach areas where insects may hide. DO NOT apply directly on food/feed, utensils or on areas where food/feed is stored.

ORNAMENTAL PLANT PESTS

For the control of:

aphids	leafrollers
beet armyworms	orange tortrix
blister beetles	periodical cicadas
boxelder bugs	plant bugs
certain leafminers (Boxwood, Holly, Oak, Spruce Needle)	rose chafers
	rose midges
	rose slugs
elm leaf beetles	tent caterpillars
flea beetles	thrips
Japanese beetles	weevils
leafhoppers	

SHRUBS AND ORNAMENTALS: Apply when insects or their damage first appear and repeat at weekly intervals or as necessary. Apply 8 ounces per 1000 square feet; or thoroughly apply to place a thin layer of dust on both upper and lower sides of leaves, stems, and flowers.

ROSES, PETUNIAS, CHRYSANTHEMUMS, GERANIUMS, CARNATIONS, AND OTHER RELATED FLOWERS: To control many leaf and flower chewing insects, apply as soon as the insect appears and repeat at 7 day intervals or as long as insects continue to appear. Apply a thin layer of dust on both upper and lower sides of leaves, stems, and flowers.

OUTDOOR USE

PERIMETER TREATMENT: Use DeltaDust Insecticide as a residual treatment for control of **ants, bees, centipedes, cockroaches, crickets, firebrats, fleas, ground beetles, millipedes, scorpions, silverfish, slugs, sowbugs, spiders, ticks, and wasps.** Make a residual treatment around windows and doors, porches, screens, eaves, patios, garages, under stairways, in crawl spaces, and other areas where pests hide. To help prevent the invasion of buildings and structures by these pests, apply thoroughly and uniformly to the foundation and crawl spaces where pests are active and may find entrance.

SEWER TREATMENT: Cockroach infestations in sanitary sewers may be treated with DeltaDust Insecticide to provide quick knock-down and short-term population suppression. When treating sewers, one manhole per 200 linear feet should be treated. Treatments are made by removing the manhole cover and replacing with a disc of plywood bored to receive the typical flexible hose from portable or truck-mounted ventilating equipment. Apply 1 - 2

ounces of dust into the ventilating air to be dispersed quickly and thoroughly through the system.

TELECOMMUNICATION TREATMENT: Apply DeltaDust Insecticide into telecommunication conduits, cracks and crevices, junction boxes, etc. using suitable application equipment (such as Actisol DPA Duster, or other types of application equipment capable of applying the proper amount). The amount of DeltaDust Insecticide to be applied will vary, but should usually be approximately 1 gram of dust per cubic foot of conduit. To calculate cubic feet, use the following equation: $\pi \times \text{radius}^2 \text{ of the conduit} \times \text{length of the conduit}$. NOTE: radius = one-half the diameter. Example: 500 linear feet of a 4" (12" = 1 foot; therefore, 0.33 ft) conduit = $3.14 \times (0.17 \text{ ft} \times 0.17 \text{ ft}) \times 500 \text{ ft} = 45.39$ cubic feet. DeltaDust Insecticide can be used in areas showing signs of active termite infestations, such as underground telecommunication cable conduits, electrical cable conduits, junction boxes, and manholes. Apply dust through suitable application equipment (such as the Actisol DPA Duster, that is capable of delivering particles suspended in a low pressure air system). Applications should be made from both ends of a run of open conduit in cases where breakdown in the conduit is suspected. DeltaDust Insecticide can also be applied directly to the interior of the conduits after cables have been installed. Apply at the rate of 1 gram of dust per cubic foot of conduit using equipment (i.e., Actisol DPA Duster) that is capable of delivering particles suspended in a low pressure air system.

FIRE ANTS: Apply dust with a shaker can. Thoroughly apply to adequately cover mound and around the perimeter (18" from the outer edge of the mound). A second treatment may be necessary if complete control is not obtained. DO NOT DISTURB THE MOUND PRIOR TO APPLICATION. If possible, treat all colonies in the vicinity. Also, treat colonies which have not yet constructed a mound.

FLEAS AND TICKS IN RODENT BURROWS: To control fleas and ticks in and around rodent burrows around homes and other buildings, apply DeltaDust Insecticide with a shaker can. For prairie dogs thoroughly treat quarantine areas and holding areas as well as burrows in open fields. Thoroughly apply dust to adequately cover mound and around the perimeter (18" from the outer edge). Be sure to treat abandoned rodent burrows which are suspected of containing fleas and ticks. Treat for a minimum of 5 days for light rodent populations, 10 days when populations are dense. Apply as needed for control.

STORAGE AND DISPOSAL

Do not contaminate water, feed, or food by storage or disposal.

Pesticide Storage: Store product in original container in a cool, dry, locked place out of reach of children.

Pesticide Disposal: Wastes resulting from the use of this product may be disposed of on site or at an approved waste disposal facility.

Container Handling:

Non-refillable container. Do not reuse or refill this container. Completely empty bottle into application equipment or through applying directly from bottle, by shaking and tapping sides and bottom to loosen clinging particles. Place in trash. If partly filled: Call your local solid waste agency for disposal instructions. Never place unused product down an indoor or outdoor drain.

IMPORTANT: READ BEFORE USE

Read the entire Directions for Use, Conditions, Disclaimer of Warranties and Limitations of Liability before using this product. If terms are not acceptable, return the unopened product container at once. By using this product, user or buyer accepts the following Conditions, Disclaimer of Warranties and Limitations of Liability.

CONDITIONS: The directions for use of this product are believed to be adequate and must be followed carefully. However, it is impossible to eliminate all risks associated with the use of this product. Crop injury, ineffectiveness or other unintended consequences may result because of such factors as weather conditions, presence of other materials, or the manner of use or application, all of which are beyond the control of Bayer CropScience LP. All such risks shall be assumed by the user or buyer.

DISCLAIMER OF WARRANTIES: TO THE EXTENT CONSISTENT WITH APPLICABLE LAW, BAYER CROPSCIENCE LP MAKES NO OTHER WARRANTIES, EXPRESS OR IMPLIED, OF MERCHANTABILITY OR OF FITNESS FOR A PARTICULAR PURPOSE OR OTHERWISE, THAT EXTEND BEYOND THE STATEMENTS MADE ON THIS LABEL. No agent of Bayer CropScience LP is authorized to make any warranties beyond those contained herein or to modify the warranties contained herein. TO THE EXTENT CONSISTENT WITH APPLICABLE LAW, BAYER CROPSCIENCE LP DISCLAIMS ANY LIABILITY WHATSOEVER FOR SPECIAL, INCIDENTAL OR CONSEQUENTIAL DAMAGES RESULTING FROM THE USE OR HANDLING OF THIS PRODUCT.

LIMITATIONS OF LIABILITY: TO THE EXTENT CONSISTENT WITH APPLICABLE LAW, THE EXCLUSIVE REMEDY OF THE USER OR BUYER FOR ANY AND ALL LOSSES, INJURIES OR DAMAGES RESULTING FROM THE USE OR HANDLING OF THIS PRODUCT, WHETHER IN CONTRACT, WARRANTY, TORT, NEGLIGENCE, STRICT

LIABILITY OR OTHERWISE, SHALL NOT EXCEED THE PURCHASE PRICE PAID, OR AT BAYER CROPSCIENCE LP'S ELECTION, THE REPLACEMENT OF PRODUCT.

Actisol® is a registered trademark of William Evans. Bayer (reg'd), the Bayer Cross (reg'd) and DeltaDust® are registered trademarks of Bayer.

Produced for:
Bayer Environmental Science
A Division of Bayer CropScience LP
5000 CentreGreen Way, Suite 400
Cary, NC 27513

Bayer



DeltaDust[®]

INSECTICIDE

- PROVIDES QUICK CONTROL OF ANTS, BEES, COCKROACHES, FLEAS, SILVERFISH, TICKS, AND NUMEROUS STORED PRODUCT PESTS AS LISTED.
- KILLS LISTED CRAWLING INSECTS UP TO 8 MONTHS WHEN LEFT UNDISTURBED.
- FOR USE INDOORS AND OUTDOORS.
- DOES NOT CLUMP OR ABSORB MOISTURE.
- NON-STAINING AND ODORLESS.

ACTIVE INGREDIENT:

Deltamethrin.....	0.05%
OTHER INGREDIENTS	99.95%
TOTAL	100.00%

EPA Reg. No. 432-772

KEEP OUT OF REACH OF CHILDREN

PARA EL USUARIO: Si usted no lee inglés, no use este producto hasta que le hayan explicado completamente las instrucciones en la etiqueta. **(TO THE USER:** If you cannot read English, do not use this product until the label has been fully explained to you.)

See Booklet for Complete Precautionary Statements
and Directions for Use.

For MEDICAL and TRANSPORTATION Emergencies
ONLY Call 24 Hours A Day 1-800-334-7577
For PRODUCT USE Information Call 1-800-331-2867

Net Weight

1 Pound

04191071

04494104H 160805AV2

PRECAUTIONARY STATEMENTS

ENVIRONMENTAL HAZARDS

This product is extremely toxic to fish and aquatic invertebrates. Use with care when applying in areas adjacent to any body of water. To protect the environment, do not allow pesticide to enter or run off into storm drains, drainage ditches, gutters, or surface waters. Applying this product in calm weather when rain is not predicted for the next 24 hours will help to ensure that wind or rain does not blow or wash pesticide off the treatment area. This pesticide is highly toxic to bees exposed to direct treatment on blooming crops or weeds. Do not apply this product or allow it to drift to blooming crops or weeds while bees are foraging the treatment area.

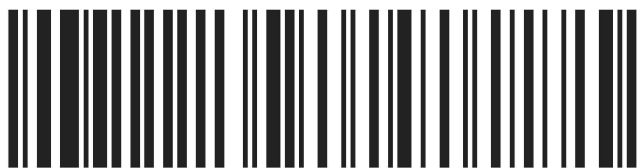
STORAGE AND DISPOSAL

Do not contaminate water, feed, or food by storage or disposal.

Pesticide Storage: Store product in original container in a cool, dry, locked place out of reach of children.

Pesticide Disposal: Wastes resulting from the use of this product may be disposed of on site or at an approved waste disposal facility.

Container Handling: Non-refillable container. Do not reuse or refill this container. Completely empty bottle into application equipment or through applying directly from bottle, by shaking and tapping sides and bottom to loosen clinging particles. Place in trash. If partly filled: Call your local solid waste agency for disposal instructions. Never place unused product down an indoor or outdoor drain.



(01)00785740193808

Bayer

04494112G 160805AV2

Produced for:
Bayer Environmental Science
A Division of Bayer CropScience LP
5000 CentreGreen Way, Suite 400
Cary, NC 27513
Product of India